



# INDIRA GANDHI KRISHI VISHWAVIDYALAYA Raipur (IGKV) - At a Glance



**IGKV:** Indira Gandhi Krishi Vishwavidyalaya (IGKV), Raipur is an autonomous, nonprofit, research and educational organization working for the up-liftment of farmers livelihood of Chhattisgarh. Education, Research and Extension are the major activities of the Vishwavidyalaya. It has a long historical background. In the British regime agricultural research station at Labhandi Farm was established in the year 1903 which has grown today as Indira Gandhi Krishi Vishwavidyalaya. During mid-sixties, this centre was recognized and established as Rice Research Station and was converted to Madhya Pradesh Rice Research Institute in 1974 under the leadership of great rice scientist, Late Dr. R. H. Richharia, the first Director of Institute. The College of Agriculture, Raipur was established in 1961 at this center. In 1979, the center was named as Zonal Agricultural Research Station under National Agricultural Research Project.

IGKV, Raipur was established on January 20, 1987 and has now expanded many folds catering the need of teaching, research and extension through its 28 constituent & 11 Affiliated colleges of Agriculture, Agril. Engineering and Food Technology, 08 Research Centers, and 27 Krishi Vigyan Kendras located throughout the state. It is the single agricultural university of state serving 33 districts and 03 different Agro-climatic Zones. The state is larger than the states like Punjab, Haryana and Kerala put together.

**Vision:** Sustainable integrated development of agriculture for rural livelihood enhancement, generation of economic growth and opportunities in Chhattisgarh.

**Mission:** To improve the competitiveness of agricultural sector by building capacity, enhancing productivity and profitability, maintaining sustainability of production and consumption systems through efficient use of Natural Resource, energy, and catalysing innovation across the agriculture to ensure food & nutritional security and inclusive growth.

**Objectives:** Empowering youth with knowledge and skill and improve quality and efficiency of human resource. Undertake basic, applied and adaptive research to evolve appropriate solution and technology that raise agricultural productivity, profitability, income, ensures employment opportunities, and sustainability of production and consumption systems with special focus on small farm holders. Commercialization of technologies through organized IPR and benefit-sharing system. Developing educational and research networks in agriculture and allied field for the state agriculture and allied sectors. Imparting knowledge and education to the people engaged in agriculture and allied fields. Facilitate accelerated dissemination of improved technologies, knowledge and information. Promote effective, efficient and decentralized governance by introducing best management practices.

**Education:** It is being imparted in two faculties in the Universities viz., Faculty of Agriculture and Faculty of Agricultural Engineering including 28 constituent colleges and 11 private affiliated colleges. The University is presently offering 03 UG, 20 PG and 19 Ph.D. degree courses in these faculties through various colleges spread throughout the state. The intake capacity of students in 2023-24 at UG is 2779 including 2179 from constituent and 600 from private affiliated colleges while enrolled students are 2056 including 1787 from constituent and 269 from private affiliated colleges. Similarly, intake capacity of PG students is 629 and enrolled is 561 while intake of Ph.D. is 165 and enrolled is 135. The total students on roll in the university in 2023-24 are 11592.

**Courses offered:** Courses at IGKV are offered at various levels like Undergraduate Degrees i.e. Bachelor of Science in Agriculture (Hon.), Bachelor of Technology in Agril. Engineering and Food Technology, Postgraduate Degrees (MBA in Agribusiness Management, M.Sc. in Forestry, M.Sc. in Agriculture-12, M.Sc. in Horticulture-03, M.Tech. in Agril Engg-03), and Doctoral levels (19 disciplines of Agriculture, Horticulture and Agril. Engineering).



**Facilities and Infrastructure:** In addition to the classrooms, IGKV Raipur also provides ample facilities for its students. The colleges have boys and girls hostels to accommodate about 1000 students at Raipur. It has a medical clinic where students can get emergency medications. The IGKV's agricultural faculties coordinate education, research, and extension activities. At Raipur campus, we have cluster class room facility. The campus is full of greenery, looks beautiful and comfortable.

**Laboratories:** IGKV has state-of-the-art scientific facilities, laboratories and infrastructures. IGKV has world class rice lab for conducting all kinds of basic and advanced research in rice and other crops. We have NABL accredited lab for analysis of pesticide residues to export vegetables and other commodities.

**Library:** The central library of the IGKV is the Nehru Library. The library is fully automated and subscribes to national online journals. It has e-books, a CD-ROM database, and monographs. It was first opened in the year 2013 and is housed in the college's administrative building. The library is well equipped with latest communication and information technologies including web based online e-services, e-resources and internet browsing. The library is a member of Consortium for e-Resources (CeRA) for online journals agricultural resources and

audiovisual equipment, allowing you to enjoy a concert without disturbing your classmates.

**Sports Facilities:** Ample facilities for sports activities are present for the younger sportsperson on the campus. College students have additionally gained many laurels in the area of Sports. The campus affords Football, Volleyball, Cricket, Table Tennis, and badminton. Students can enjoy playing indoor and outdoor games. The campus also has gymnasium and gym facilities for both students and staff.

**Medical Facilities:** Students can also get access to a medical clinic with a regular service of a senior physician, which provides emergency medication and treatment for various diseases.

**Cafe/Mess Facility:** The campus has a beautiful cafeteria, which offers snacks and food at reasonable prices all day long for students and staff along with other shops for student's needs.

**Centre of Excellence:** IGKV, Raipur has three centres of excellence:

**Medicinal and Aromatic Plants & Non-Timber Forest Produce:** It is a dedicated Centre for working on medicinal & Aromatic plants established during 2014-15. AICRP MAPs and Betel vine and Directorate of Areca nut and Spice Development, Calicut supported CSS-MIDH project is also associated with the Centre.

**Protected Cultivation and Precision Farming:** It was established in December 2015 under the National Agriculture Development Scheme (NADS).



major partner of Krishikosh national institutional repositories. Nehru Library maintains around one lakh collection i.e. books, reports, theses, monographs, journal volumes, e-Resources and other reference material. Library subscribes > 300 journals in physical form and > 4000 electronically (e-journals). The library has a working 'Cybrary' with highly configured terminals and Wi-Fi connectivity with CCTV and anti-theft security systems. Nehru Library is equipped with CCTV and RFID system with self-issue return, drop box facilities.

**Auditorium:** There are three Auditorium at IGKV campus, Raipur. Swami Vivekanand Auditorium (500-seater) is located at College of Agriculture, Raipur. Another auditorium called "Krishi Mandapam" is situated nearby College of Agriculture, Raipur with the seating capacity of 3000. Similarly, a big Auditorium of 1200 capacity is located in the university campus with several seminar halls for small gatherings. All the auditoriums are located inside the campus and has excellent facilities for events and seminars. It can accommodate up to 4,700 people for meetings and seminars. The main attraction of the campus is the Auditorium. It is the central hall of the school and is an excellent venue for concerts, conferences, and other public events. Besides the Auditorium, you can also attend lectures and other public programs held at the institution. The auditorium is equipped with state-of-the-art

**Agro-Industrial Biotechnology:** It was established in the year of 2016 with the financial support of Rs. 3.0 crore from RKVY. The purpose of this centre was to impart training to the young professional interested in setting up the production unit and state officials of the Department of Agriculture and Horticulture and Farm Forestry, Govt. of Chhattisgarh, SMS from KVKs of Chhattisgarh and improved farmers. This centre has two pilot plants for limited scale production of Bio-control agents and Bio-fertilizers.

**Admission:** The admission to B.Sc. Agriculture (Hons) is confirmed based on merit in the CG PAT of the State Board. Admission to B. Tech. of Agriculture Engineering/ Food Technology is offered based on performance in the Pre-Engineering Test (PET). The admissions to Postgraduate courses are allocated based on the merit in the Common Entrance Test (CET) for graduates of Agriculture conducted by IGKV, Raipur. For Ph.D. also a Common Entrance Test is also conducted by the university and admission criteria include performance in CET and academic score in post-graduation.

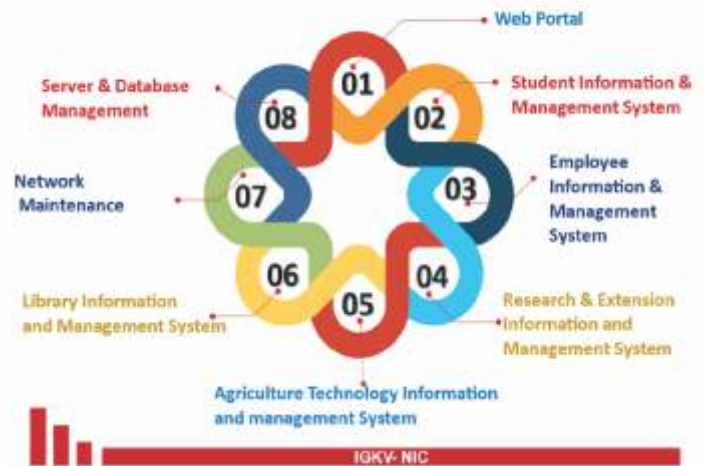
**Placements:** The IGKV Placement cell serves efficaciously in phrases of placements and invitations to organizations from the location of agriculture and associated fields. The cell enables in getting their college students to have the highest-quality possibilities. The college students are well-educated via Personality improvement programs, professional counselling workshops, and seminars. The Internship in studies facilities equips college students with the specified enjoyment of their corresponding fields. Public sector organisations and Private companies providing placements to college students consists of Food Corporation of India, the State Bank of India. Semantics Technologies Private Limited, Kribhco Fertilizers Limited, IFFCO Kisan Sanchar Limited, Nuziveedu Seeds, Crop Facts Technology Private Limited, etc.

**IGKV R-ABI Agri startup:** This project was founded at IGKV, Raipur in 2018-2019 and the only Agribusiness and leading Incubator in Chhattisgarh supported by Ministry of Agriculture and Farmers Welfare, Govt. of India. It offers equipped incubation space, technical and business mentoring, networking with agribusiness industry, scientific and information resources. Provide Grant-in-aid for pre seed and seed stage support ranging between 5 to 25 lakhs subject to stage of progress. It has impacted 50 IP certification, 180 DPIIT recognition and 05 Gem registrations. Revenue earned by Starts up reached to INR 85 crores, investment raised to INR 20.87 crores and served over 70,000 farmers.



**Major achievements of IGKV:** IGKV, Raipur has secured 10-23rd Rank amongst Agricultural Universities in the Annual Ranking by ICAR, New Delhi for the year from 2016-17 to 2020. The student of university has made significant achievement in the national level exams, 75 students qualified JRF, 7 students qualified SRF, 157 qualified NET and 31 qualified ARS. All the systems of the university have been modernized with the adoption and shifting on to the Management Information System (MIS). The admission, counseling, examination and

## GOVERNANCE ACTIVITIES



evaluation are automated through customized IGMIS system and obtained outstanding e-Governance initiative in academic and research at 20th National Conference on e-Governance. Establishment of videoconferencing system in about 23 constituent colleges of the university. The support provided as NTS to UG and PG students has attracted large number of students from other states which has been found a good tool to increase the diversity and discourage the inbreeding. Exposure to the students through educational visits and participation in cultural activities such as Agri-Unifest and Agri-Unisports has been found significant in the personality development of the students. Contingent support for the practical classes and laboratory strengthening definitely helped in providing quality education to the students. The support for faculty improvement programme and participation in seminar /symposium/training courses significantly helped in the quality improvement and knowledge enhancement of the faculties. The scheme of instituting the Best Teacher Award and Best Student Thesis Research Publication Award have been found significant in motivating the students and teachers for quality teaching and class room evaluation of the students. The university is known for maintaining its largest number of germplasms of rice (23,250) next only to IRRI, Philippines and many other crops (4532). It has registered 465 farmers variety with PPV&FRA, Govt. of India and awarded 02 GI tags of rice varieties Jeeraphool and Nagri Dubraj.

The university has most advanced, interactive, e-enabled Agricultural Museum with demonstration of latest agricultural and allied technologies developed by the university. This museum is visited by about 2.5 lakhs public representatives from Chhattisgarh and other states of the country, school students, farmers, bureaucrats, political leaders etc.





**Act, Statues and Regulations:** IGKV is governed by Indira Gandhi Krishi Vishwavidyalaya Adhiniyam (Act) 1987 of Madhya Pradesh State and Indira Gandhi Krishi Vishwavidyalaya statutes 1987 (9 September 1987) and with subsequent amendments (4 October 1990, 26 September 1994 and 15 March 1995). In exercise of the powers conferred by section 38 of the Indira Gandhi Krishi Vishwa Vidyalaya Adhiniyam 1987 (No. 20 of 1987), the State Govt. made 68 Statutes covered under 9 chapters passed by the State Legislative. These Statutes are for appointments of Teachers, Officers, Other employees of the University, Academic programmes, Admissions, performance, Degrees, Diplomas, Awards, Staff Housing, Student Hostels, Scholarships, fees, Alumni Associations and others. BOM & AC subject to the provision of the Act & Statutes, make Regulations like Academic regulations, Guideline for Best teacher award, IGKV Lien rule, University students' union regulations for election, Hostel regulations, Regulations for appointment of part time teacher in constituent colleges, Regulations cum guidelines for consultancy services, commercialization of technologies and PPP, IGKV Rules and Guidelines for consultancy and contract services 2013, Regulations for study leave to teachers & SMS of KVKs for higher study, API based appraisal system or CAS of University teacher, Regulations for scholarship to PG and Ph.D. students of IGKV for thesis research work, Regulations for women harassment 2013. Minimum standards for establishing college of agriculture, horticulture and agricultural engineering, Regulations for university gold medal, Regulations for memorial gold medal, Regulations cum

guidelines for admission of foreign students.

**Monitoring Mechanism:** University is comprehensively monitoring through academic council, administrative council, research council and extension council. The monitoring and coordination between research/extension system is ensured by FOUR level meetings. Level 1 – At Regional Research Station Level, Level 2 – At Discipline Level, Level 3 – At Directorate Research Level and Level 4 – At University Level – Research and Extension Advisory Council. The extension activities of KVKs are monitored through monthly meetings, bi-annual meeting, SAC meeting. Deans through Head of Department/ Head of the section monitors the academic and research activities. The IQAC/PME Cell of the university is established at headquarters and in the out campii of VV. It works on planning of various activities like new/frontier area of the research, location-specific and need-based transfer of adoptable technology through KVKs and state agencies. The cell also takes care of maintenance of institutional data base through MIS enabling the system for quality improvement.

**Collaboration with Academic Institutions and Industry:** IGKV has collaborations with the CGIAR International academic organisations like ICRISAT, Hyderabad, IRRI, Manila (Philippines), APAARI, Bangkok (Thailand). The signing of MoU with Cornell University and Western Sydney University, Australia is in the pipeline for which the state Govt. is supporting the programme. IGKV has signed MOU with 67 National organizations including 38 ICAR Institutes/CAUs/SAUs/Other National Institutes for promoting innovative students research in frontier areas of agriculture (NAARM, MANAGE, IHR, BARC, NRSC (ISRO), CRRI, IIFM, UAS Bangalore etc.) across India. IGKV is also strengthening the linkages with industries by creating special allocation of seats in MBA (Agri Business) programme for candidates sponsored by industries.

**Extracurricular Activities:** All the colleges of Agriculture, Agril. Engineering and Food technology offers NSS but NCC is offered by some of the colleges of Agriculture and Agril. Engg. at Raipur and other campii to develop the feeling of Nationalism and self-motivation in student's community to serve the society. Cultural facilities are available in almost all colleges.



## GLIMPSES OF NCC

